



PowderMax

Powder spray systems with innovative plate dosage technology for the sheetfed offset

System features

- Innovative plate dosage system
- Dust free powder change
- Exact powdering with the Powder System

benefits

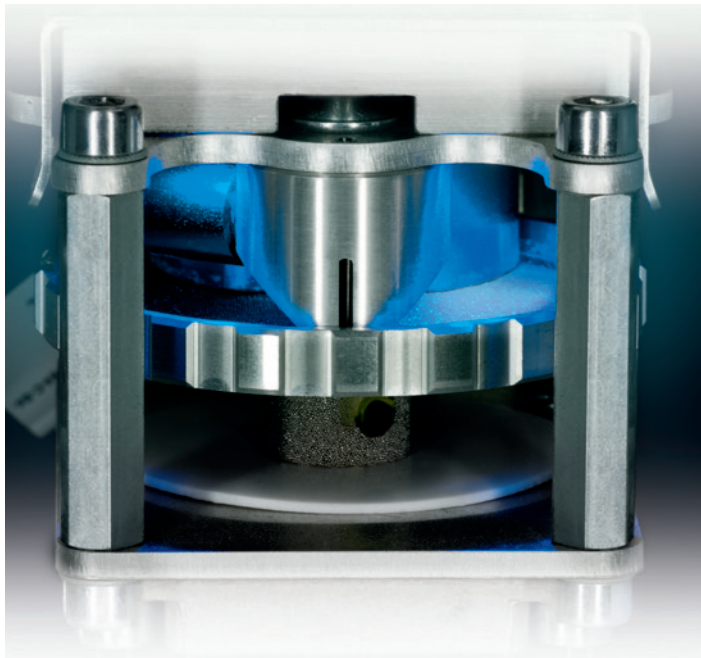
- Exact dosage with all powder types
- Simple, fast and clean refilling with the Clean Filling System
- Simple operation via touch screen or press control panel

High tech powder sprayers Available for all sheetfed presses

Eltosch Grafix PowderMax – Platedosage sets new benchmark

features:

The new PowderMax points with innovative plate dosage – reliable for every powder use. Dosaging is simple and highly exact – using a set point for the required amount of powder. Eltosch Grafix PowderMax offers this high performance together with automatic format adaptation and speed compensation. Even for the fastest presses with speeds it is the first choice.



PowderMax plate dosage system

Easy handling, dust free exchange – the Clean Filling System

Screw in the bottle, click up, done. It couldn't be simpler or cleaner to refill or change powder. This is made possible by the turn-tilt mechanism, and the no spill bottle holder. This

also provides improved working hygiene – nothing is spilt to get into the air ways. Eltosch Grafix refill bottles of high-quality powders are available in 750g and 1500g bottles.



Clean filling system

The HEP®-nozzle tube (High Efficiency-Powder System)

delivers the powder direct on target where it's needed. The custom-cut nozzles reduce the amount of compressed air at the powder outlet, therefore causing only limited diffuse air currents. Result – The even and exact powder application maintains the printing press cleaner for longer. In addition, the Twist&Click-technique means an occasional cleaning of the nozzles is simple.



hönle group		Drying	Powder	Curing	Cooling	Service
aladin	eleco-efd	eltosch grafix	hönle	panacol	printconcept	raesch
				tangent	uv-technik speziallampen	



Eltosch Grafix GmbH, Fahltkamp 64, 25421 Pinneberg, Germany
Phone: +49 4101 5150 700, Fax: +49 4101 / 5150 729. www.eltosch-grafix.com

Operating parameters depend on production characteristics and may differ from the foregoing information. We reserve the right to modify technical data. © Copyright Eltosch Grafix GmbH. Updated 04/16.